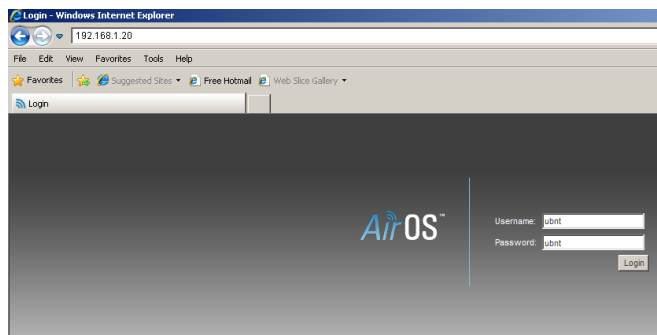


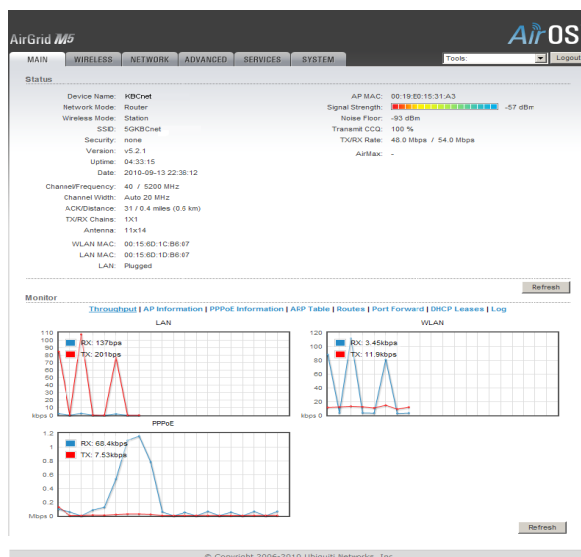
UPUTSTVO ZA PODEŠAVANJE UBIQUITY AIR GRID M5

Nakon što ste namontirali opremu i priključili je na vaš računar potrebno je da udjete u podešavanje Vaše mrežne kartice (*Start* → *Control Panel* → *Network Connections* → *Local Area Connection* → *Properties* → *Internet Protocol (TCP/IP)*), obeležite opciju *Use the following IP address*, pa u *IP address* upišite 192.168.1.45, u *Subnet mask* 255.255.255.0. Nakon što prihvatite nove parametre otvorite web browser (Internet Explorer, Mozilla, Opera), a zatim u *address* polju upišite 192.168.1.20, nakon toga pojaviće se *log in* prozor (Slika 1) i u traženim poljima upišite za *user*: ubnt i za *password*: ubnt.

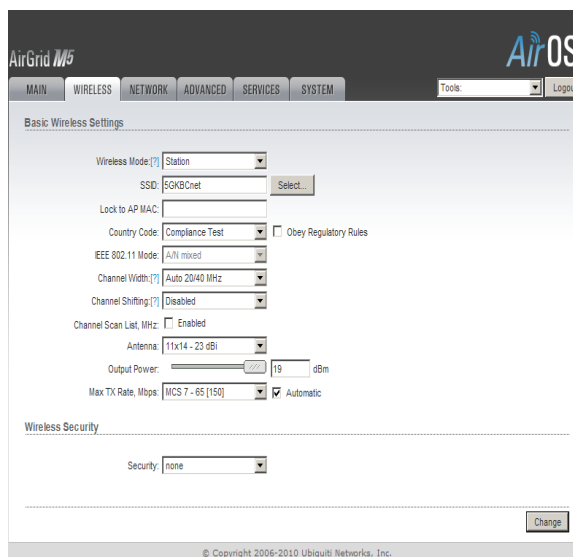


Slika 1

Posle uspešno unesenih parametara dobićete prozor kao na Slici 2.



Slika 2



Slika 3

Zatim odaberete *Wireless* (Slika 3) i u polju *Wireless Mode* odaberite *Station*, u *Country Code* postavite opciju *Compliance Test* zatim odaberite opciju *Select...* i dobićete prozor kao na Slici 4.

```
Scanned channels: 1 2 3 4 5 6 7 8 9 10 11 12 13 14 15 16 17 18 19 20 21 22 23 24 25 26 27 28 29 30 31 32 33 34 35 36 37
39 40 41 42 43 44 45 46 47 48 49 50 51 52 53 54 55 56 57 58 59 60 61 62 63 64 65 66 67 68 69 70 71 72 73 74 75 76 77 7
79 80 81 82 83 84 85 86 87 88 89 90 91 92 93 94 95 96 97 98 99 100 101 102 103 104 105 106 107 108 109 110 111 112 1
114 115 116 117 118 119 120 121 122 123 124 125 126 127 128 129 130 131 132 133 134 135 136 137 138 139 140 141 1
143 144 145 146 147 148 149 150 151 152 153 154 155 156 157 158 159 160 161 162 163 164 165 166 167 168 169 170 1
172 173 174 175 176 177 178 179 180 181 182 183 184 185 186 187 188 189 190 191 192 193 194 195 196 197 198 199 2
```

	MAC address	ESSID	Encryption	Signal, dBm	Noise, dBm	Frequency, GHz	Channel
<input type="radio"/>	00:0B:6B:56:21:CD	eControl	-	-79	-85	5.5	100
<input type="radio"/>	00:0C:42:0C:27:FD	5G_V2KBnet	-	-76	-93	5.18	36
<input type="radio"/>	00:0D:67:08:74:47		-	-82	-86	5.7	140

Select Scan Close this window

Slika 4

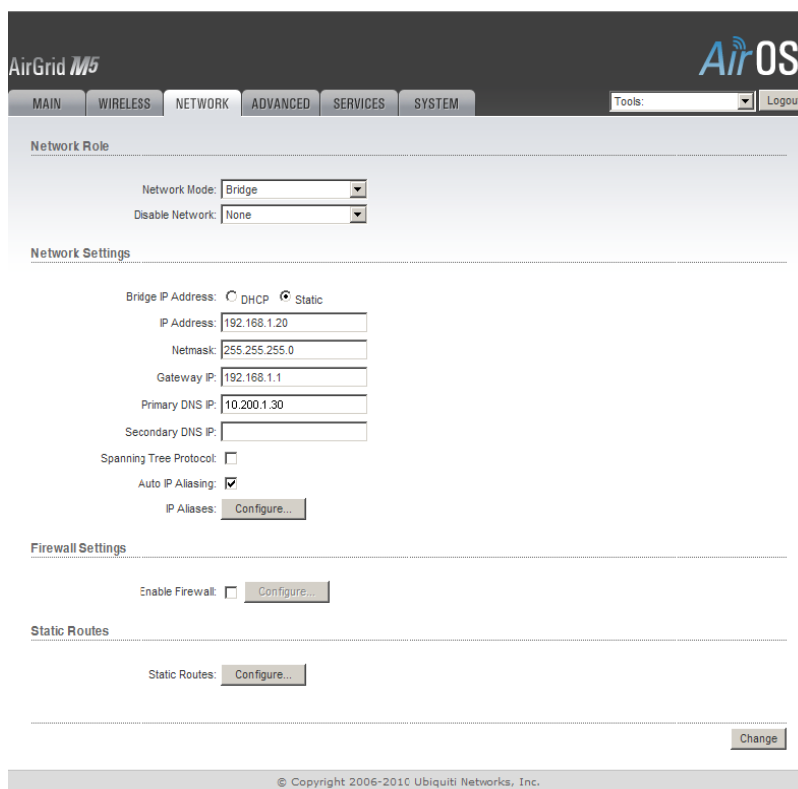
Nakon toga pritisnite opciju **Scan** i dobićete spisak svih signala koji se vide u Vašoj okolini. Obeležite naš kanal koji vidite sa najjačim signalom, a zatim pritisnite **Select**. Po završetku kliknite na **Close this window**. Na dnu stranice kliknite na **Change**, a zatim na **Apply** u samom vrhu stranice, nakon toga uređaj je povezan na mrežu.

Potom odaberite **Network** (Slika 5) i podesite **Network Mode**, koji može biti **Bridge** ili **Router**.

Podešavanje Bridge moda

(uređaj omogućava da se koristi više zasebnih korisničkih naloga)

U polju **Network mode** odaberite **Bridge**, pa na dnu stranice kliknite na **Change**, a zatim na **Apply** u samom vrhu stranice. Zatim je potrebno da se na mrežnoj kartici (*Start* → *Control Panel* → *Network Connections* → *Local Area Connection* → *Properties* → *Internet Protocol (TCP/IP)*), obeleži opcija **Obtain an IP address automatically** i **Obtain DNS server address automatically**. Kada to potvrdite, kreirajte **PPPOE** konekciju na Vašem računaru i time su podešavanja završena.



The screenshot shows the 'Network Settings' page in the AirGrid M5 web interface. The 'Network Role' section has 'Network Mode' set to 'Bridge' and 'Disable Network' set to 'None'. Under 'Network Settings', 'Bridge IP Address' is set to 'Static' with the following values: IP Address: 192.168.1.20, Netmask: 255.255.255.0, Gateway IP: 192.168.1.1, Primary DNS IP: 10.200.1.30, and Secondary DNS IP: (empty). 'Spanning Tree Protocol' is unchecked, and 'Auto IP Aliasing' is checked. There are 'Configure...' buttons for 'IP Aliases', 'Firewall Settings', and 'Static Routes'. A 'Change' button is at the bottom right. The footer contains the copyright notice: © Copyright 2006-2010 Ubiquiti Networks, Inc.

Slika 5

Podešavanje Router moda (uređaj jednu konekciju deli na više računara)

U polju **Network mode** odaberite **Router**. U **WLAN NETWORK SETTINGS** pod opcijom **WLAN IP Address** odaberite **PPPoE**, u polju **PPPoE Username** upišite Vaše korisničko ime, u polju **PPPoE Password** upišite Vašu lozinku, u **PPPoE MTU/MRU** upišite **1480/1480**. Zatim je potrebno da pod **LAN NETWORK SETTINGS** u **IP Address** unesete 192.168.1.20 i u **Netmask** 255.255.255.0, potom štiklirajte opcije **Enable NAT** i **Enable DHCP Server**. Takođe u **Range Start** bi trebalo da unesete 192.168.1.100, a u **Range End** 192.168.1.200, pa na dnu stranice kliknite na **Change**, a zatim na **Apply** u samom vrhu stranice. Na kraju je potrebno da se na mrežnoj kartici (*Start* → *Control Panel* → *Network Connections* → *Local Area Connection* → *Properties* → *Internet Protocol (TCP/IP)*), obeleži opcija **Obtain an IP address automatically** i **Obtain DNS server address automatically**. Kada to potvrdite kompletirali ste podešavanja i možete da koristite Internet.

The screenshot displays the AirOS configuration web interface. At the top, there are navigation tabs: MAIN, WIRELESS, NETWORK, ADVANCED, SERVICES, and SYSTEM. The 'NETWORK' tab is selected. The 'Network Role' section shows 'Network Mode' set to 'Router' and 'Disable Network' set to 'None'. Below this is the 'WLAN Network Settings' section, where 'WLAN IP Address' is set to 'PPPoE'. The 'PPPoE Username' field contains 'Korisničko ime' and the 'PPPoE Password' field contains 'Vaša šifra'. The 'PPPoE MTU/MRU' is set to '1480 / 1480'. In the 'LAN Network Settings' section, 'IP Address' is '192.168.1.20' and 'Netmask' is '255.255.255.0'. 'Enable NAT' is checked, and 'Enable DHCP Server' is also checked. The DHCP 'Range Start' is '192.168.1.100' and 'Range End' is '192.168.1.200'. The 'Lease Time' is set to '3600' seconds. At the bottom of the configuration area, there is a 'Change' button. The footer of the page reads '© Copyright 2006-2010 Ubiquiti Networks, Inc.'

Slika 6